



Alfa Laval PureBallast 3 retrofits

Starting smart with ballast water treatment on existing vessels

Most vessels today weren't built with a ballast water treatment system in mind. Retrofitting is always more challenging than a newbuild – but it doesn't have to be a headache. With many years of experience and the flexibility of Alfa Laval PureBallast 3, we can make it simple and smooth.

Your vessel, your solution

Retrofitting means dealing with the circumstances on board. Even sister vessels differ, so success in design and installation takes attention to detail.

PureBallast 3 systems are compact and flexible, which means they fit easily into existing space. Plus, we have the hands-on knowledge and proven routines to adapt them for your vessel. Alfa Laval's track record spans more than a decade of retrofits, including vessels of all sizes and types.

Just the scope you need

Like our technology, our approach can be tailored to you. Your needs are in focus, so we match our efforts to your specifications, resources and timeline.

No engineering department? No chosen yard? No problem. We can secure the skills you need from our own network. Anxious about timing? We can meet your existing dry dock schedule or arrange for installation during your voyage. Crew training, budgeting assistance, even financing options – it's all on the table.



Why trust Alfa Laval for your retrofit?

- Over 10 years of retrofit experience in ballast water treatment
- High flexibility in system and approach
- Deep technical and practical knowledge
- Well-established partners and procedures
- Global organization with strong logistics and local presence

What does a retrofit involve?

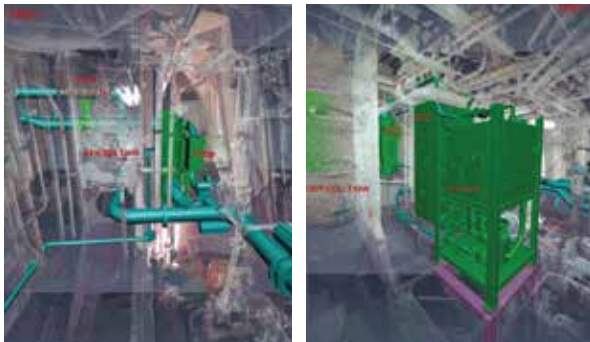
No two retrofit projects are the same, but there are common elements. Most include the following steps, adapted to the vessel and circumstances:

- Evaluation of existing ballast layout
- Preliminary onboard survey (optional)
- Onboard survey combined with 3D scanning
- Pre-engineering
- Order of system
- Detailed design
- Class approval
- Prefabrication and acquisition of materials
- Installation
- Commissioning

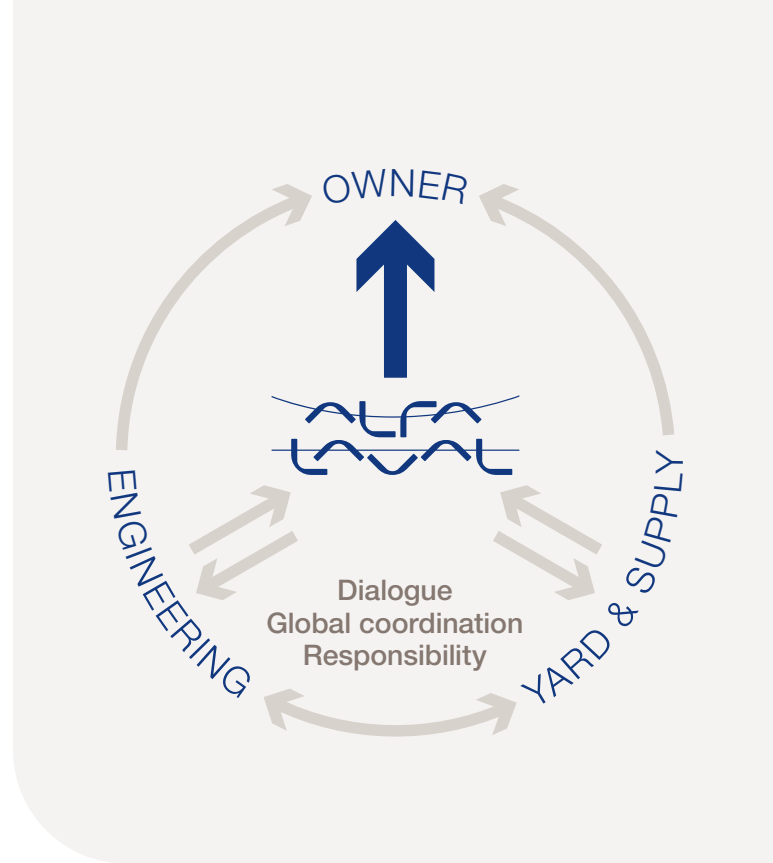
Coordinating the effort

Depending on your project, it may involve other partners besides the yard and/or installation partners. Alfa Laval's network includes resources for 3D laser scanning, engineering, class approval and more.

No matter who is involved, strong cooperation is needed for success. We safeguard the whole retrofit process, making sure all partners understand the scope, timeline and responsibilities. It's all documented in a project specification, and our well-established routines keep things moving.



3D laser scans allow exact positioning of PureBallast 3 components.



Always there, always ready

Business at sea can shift quickly. If your trade routes change before a scheduled dry docking, you may need to retrofit at a different site – perhaps in another country. If that or anything else happens, you're in good hands with Alfa Laval.

As a global organization with strong logistics and local presence worldwide, we can move with your needs. Our capabilities secure retrofit success, even when the unexpected occurs.

With you all the way

Working with us is simple, even when your project is challenging. Throughout the process, our project management team is at your side. They put Alfa Laval's experience and best practices to work for you, so that you get the best from your PureBallast 3 retrofit.

How to contact Alfa Laval

Up-to-date Alfa Laval contact details for all countries are always available on our website at www.alfalaval.com

100002098-2-EN 2008